

Integrated DC Charger

Quick Installation Guide

IDC180E



- This document will be updated from time to time due to updates of the product or other reasons. Under no circumstances should this document be taken as a substitute for the user manual and the safety instructions provided on the product.
- Before performing any operation, please read through carefully the user manual and relevant standards and specifications. You can find the related documents by visiting <http://support.sungrowpower.com/> , or by scanning the QR code provided on the device or back cover of this Quick Installation Guide.
- Operations on the device must only be performed by qualified technical persons. The qualified technical persons must have received specialized training, read through the user manual to gain a good understanding of the relevant safe operation instructions, and be familiar with the applicable local standards and safety code for electrical systems.
- Before installation, check the delivered items for quantity according to the packing list and see if the delivery matches the order you placed. Meanwhile, inspect the items for any visible damage. Contact the transport service provider or SUNGROW in case of anything abnormal.
- The cables used must all be intact and well-insulated. Be sure to use insulated tools and wear personal protective equipment properly during operation.
- Violation of any of the above requirements may result in personal injury or device damage.

Safety Disclaimer

SUNGROW shall not be held liable for any personal injury or device damage arising from device-related operations that are not carried out in compliance with the requirements specified in this document or the user manual.

DANGER

- Do not touch the contact inside the charging connector when it is powered on.
- Electrical connection must be performed by qualified personnel who wear personal protective equipment.
- All electrical connections must be done in compliance with the applicable local and national electrical standards.
- Be sure to use specialized insulated tools when performing electrical connection.
- Do not use the charger when its charging connector or cable is defective, frayed, cracked, or in case of exposed wires. Contact SUNGROW if you have found any of the above issues.
- When the charger is running, do not touch any of its live parts or remove any of its part or component; otherwise, it may lead to electrical shocks.

WARNING

- All safety signs and warning labels and the nameplate on the charger must be clearly visible and cannot be removed or covered.

CAUTION









Burn hazard!

- During the charging process, do not touch any hot part of the charger (e.g., air outlet for heat dissipation); otherwise, it may cause burns.

NOTICE

- Non-qualified personnel are forbidden from disassembling the device or moving its components.
- Do not install the device in a place with corrosives such as corrosive gas and organic solvent, etc.
- Do not install the device in dusty and smoky environments.

Marks on the Product

	Disconnect the device from all the external power sources before maintenance!		Burn hazard due to the hot surface that may exceed 60°C!
	Danger to life due to high voltages! Only qualified technical persons can install and operate the device.		Do not dispose of the device together with household waste.
	CE mark of conformity.		Read the user manual before performing any operation on the device.
	UKCA mark of conformity.		TÜV mark of conformity.

EU Declaration of Conformity

within the scope of the EU directives:



- Low Voltage Directive 2014/35/EU (LVD)
- Electromagnetic compatibility Directive 2014/30/EU (EMC)
- Radio Equipment Directive 2014/53/EU (RED)
- The restriction of the use of certain hazardous substances (RoHS) in electrical and electronic equipment Directive 2011/65/EU and Commission Delegated Directive (EU)2015/863

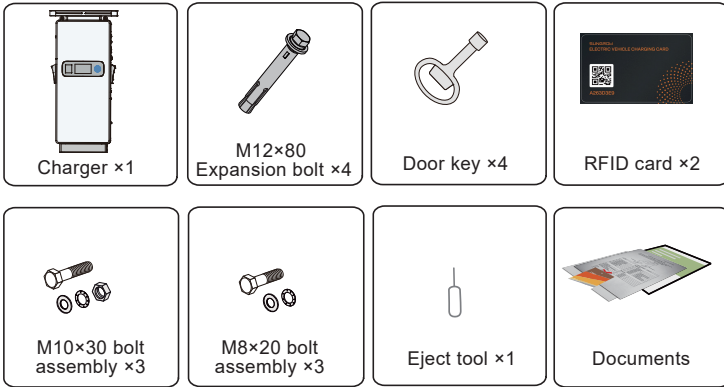
SUNGROW confirms herewith that the products described in this document are in compliance with the fundamental requirements and other relevant provisions of the above-mentioned directives. The entire EU Declaration of Conformity can be found at support.sungrowpower.com.

Radio data

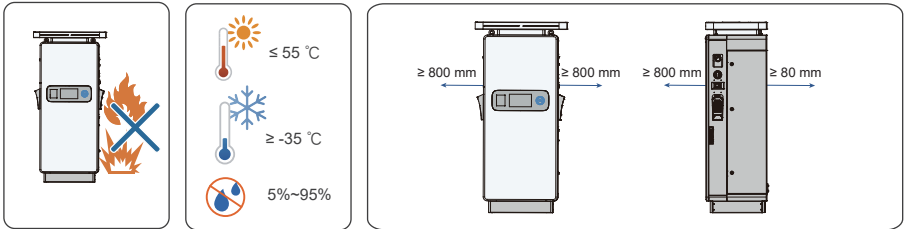
	WIFI	RFID
Model	AW-AM510-I	MT628V115
Power Supply	3.3V	5V
Frequency range	2412-2472MHz	13.56MHz
Maximum transmitting power	20dBm	<5 dB μ A/m
Max. Antenna gain	2.5dBi	0dBi
4G		
Model	EC25-EUX	
Power Supply	3.8V	
Frequency range	LTE band 1	1920~1980 MHz
	LTE band 3	1710~1785 MHz
	LTE band 7	2500~2570 MHz
	LTE band 8	880~915 MHz
	LTE band 20	832~862 MHz
	LTE band 28	703~736 MHz
	LTE band 38	2570~2620 MHz
	LTE band 40	2300~2400 MHz
Maximum transmitting power	LTE band 1	2.0 dBm
	LTE band 3	2.0 dBm
	LTE band 7	2.0 dBm
	LTE band 8	0.5 dBm
	LTE band 20	0.5 dBm
	LTE band 28	0.5 dBm
LTE band 38	2.0 dBm	
LTE band 40	2.0 dBm	
Max. Antenna gain	2.0dBi	

*Technical parameters listed above apply to EU countries only.

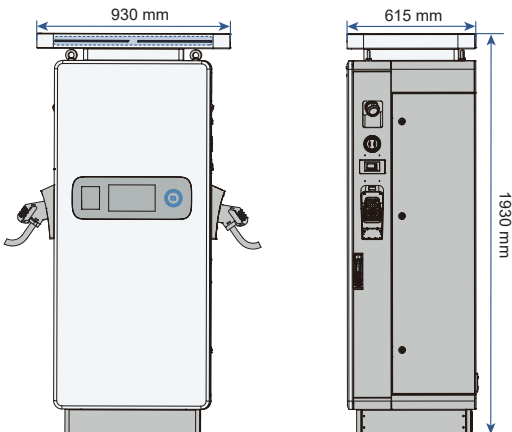
Scope of Delivery



Requirements for Place of Installation

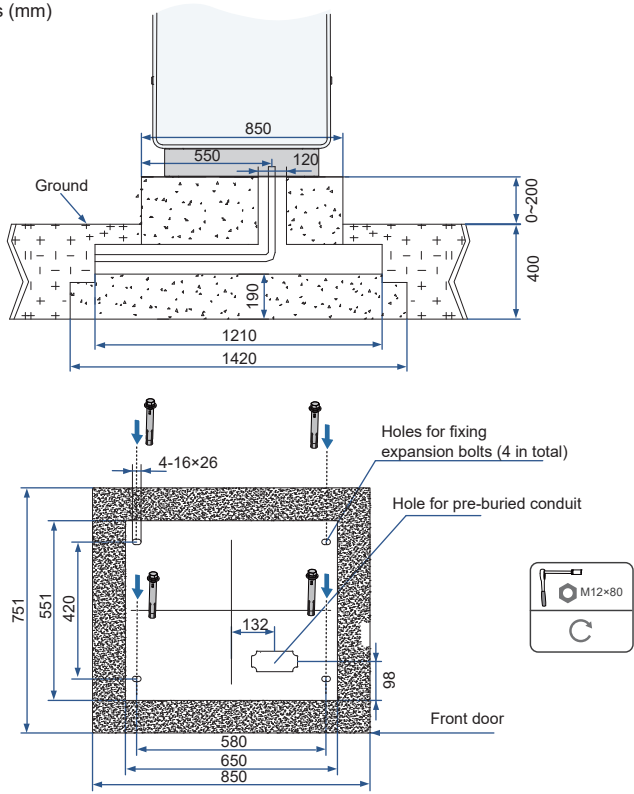


Overall Dimensions



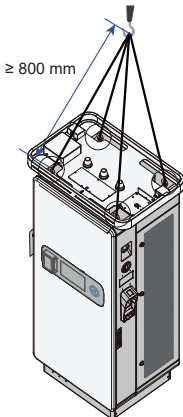
Foundation Building

Foundation Dimensions (mm)

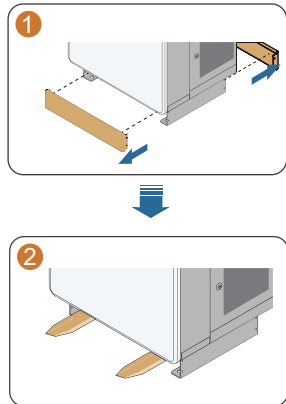


Charger Handling and Moving

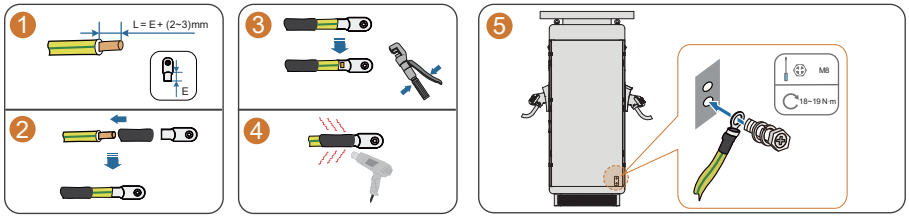
Handle with a crane



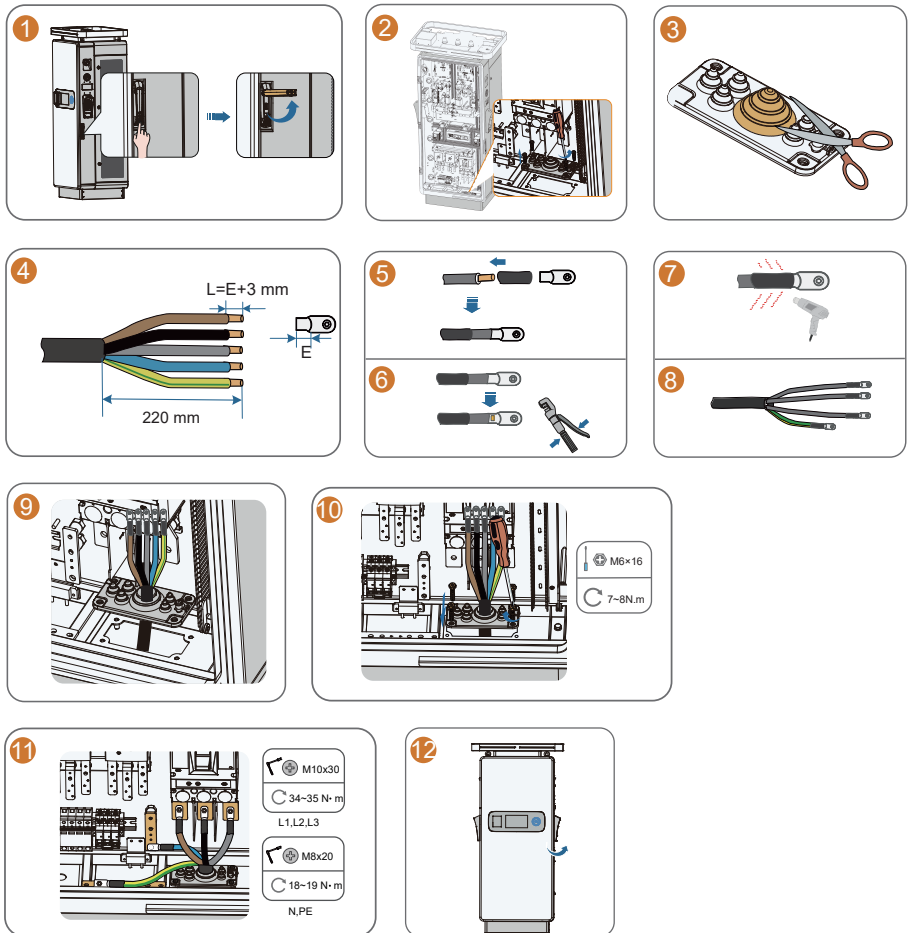
Handle with a forklift



Connection to the External Grounding Terminal

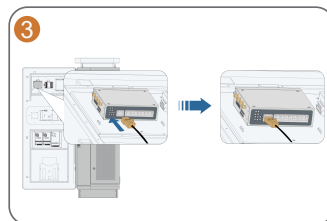
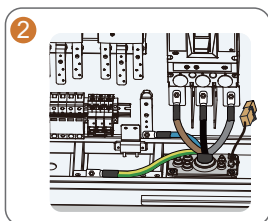
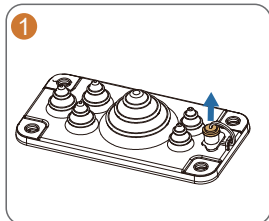


AC Cable Connection

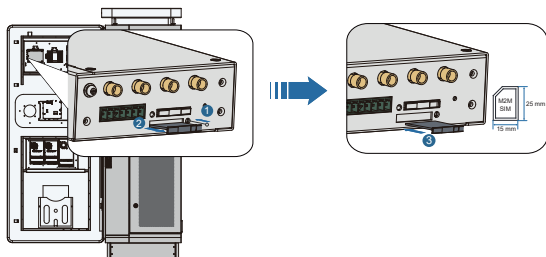


Communication Cable Connection

Option 1: Ethernet cable connection



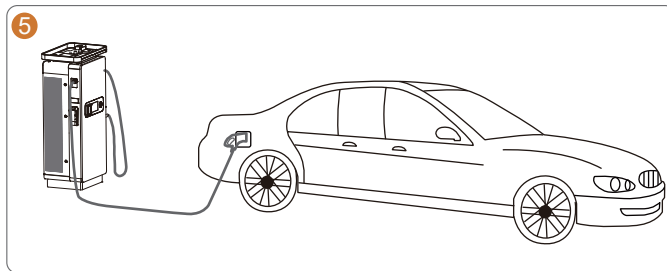
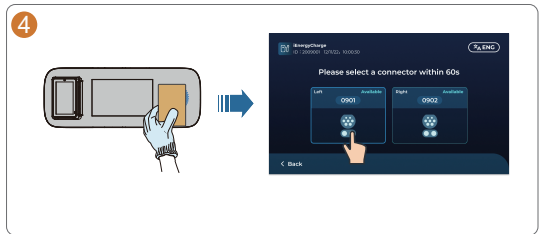
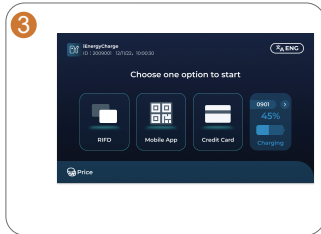
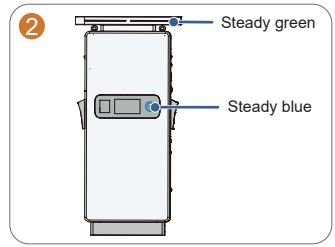
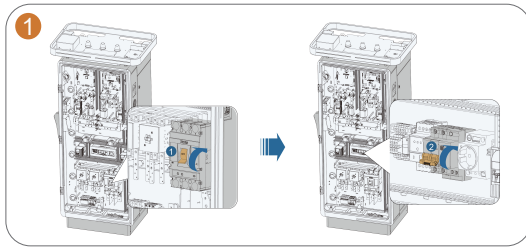
Option 2: SIM card installation



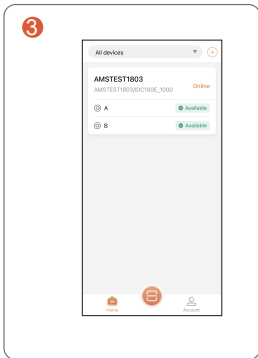
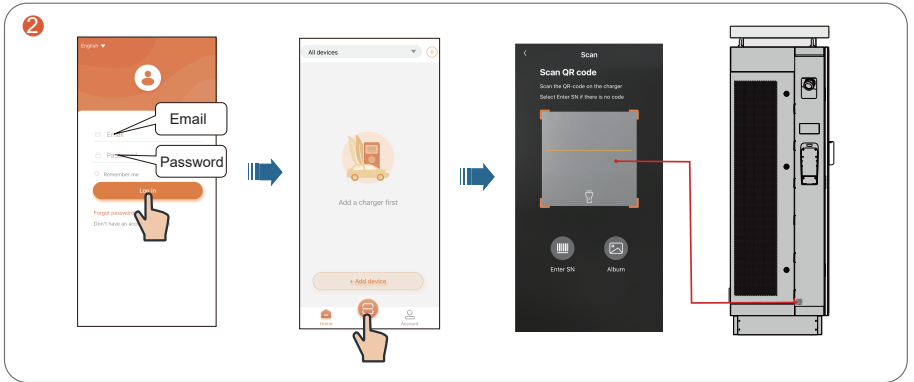
LED Indicators

Indicator	Indicator Status	Charger Status	Remark
Top indicators	Steady green	Charging connector in standby state	Normal. Indicators for the left and right connector are independent of each other.
	Breathing blue	Charging connector in use for charging	Normal. Indicators for the left and right connector are independent of each other.
	Steady blue	Fully charged	Normal. Indicators for the left and right connector are independent of each other.
	Steady red	Fault	Normal. Indicators for the left and right connector are independent of each other.
Energy Star-Ring	Blink blue	Waiting for the user to swipe a card	Normal.
	Steady blue	Charger works normally	Normal.
	Steady red	Fault with the charger	Abnormal. In case of a fault with only one of the charging connectors, the indicator is still steady blue.

Start the Charger



iEnergyCharge App (for O&M Management)





More information in the QR code or
at <http://support.sungrowpower.com/>

SUNGROW

Sungrow Power Supply Co., Ltd.

www.sungrowpower.com



CIEN MH-002852