

**Project facts** > **Enervie** **GETEC** **ENERGIE** **Mercedes-Benz Energy**  
Altengesellschaft

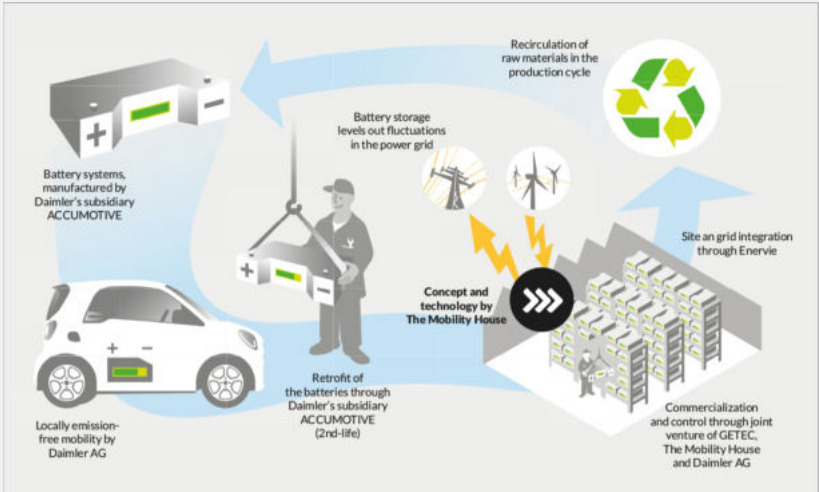
- Worldwide first battery storage for spare part batteries
- 1,363 Daimler batteries (60% 1st- / 40% 2nd-life)
- 17.1 MW power, 18 MWh storage capacity
- Together, all the storage units in the pool provide primary control power

## Coal-fired power station becomes a spare part storage for vehicle batteries

The cooperation partners Mercedes-Benz Energy, a Daimler subsidiary, GETEC ENERGIE, Enervie and The Mobility House have commissioned another innovative battery storage unit in 2018 in Elverlingsen. A large part of the batteries used in this system serves as a "living spare part storage" for the current smart electric drive fleet. For the usability of the batteries, they must be charged and discharged gently on a regular basis anyhow. The technology of The Mobility House ensures this and moreover, the batteries can generate revenues in the energy market.

### Special features of the project

- Important station for the future-oriented further development of technologies and communication between vehicle batteries and the power grid
- Intelligent technology from The Mobility House controls the gentle and targeted charging and discharging of the battery storage
- Efficient dual use of battery systems improves the environmental footprint and lifecycle costs of electric mobility



>>> *We are very pleased about the fact that our recently closed coal-fired power plant built in 1912 now becomes a milestone of the energy transition.*

Erich Höhne  
 Director  
 Enervie Group