





THE MOBILITY HOUSE



You can handle big data? Join us!

Data Engineer m/w/d

 fulltime / part time

 immediate

 Munich



What we offer you

- An open company culture and encourage each other to participate to the fullest
- We invest in you and help you develop your skills
- We are a fun and down-to-earth group with talented colleagues from all over the world
- Flexible working hours, home office & 30 days holiday
- We're working in a great office space, that energizes us everyday. Most of all we love BBQ parties on our roof terrace near the Ostbahnhof
- Together with you, we have this one Vision- to design a zero-emission future for energy and mobility
- [More about us](#)

What you do at TMH

- You support our team Virtual Battery in data preprocessing for aggregation and operation of our electric vehicles and stationary storage
- You work on data mining tools using methods of statistics and machine learning
- You develop tools and processes for data aggregation, preparation and validation to ensure the quality of our data
- You support and challenge other technology experts in topics like database and dataflow architecture, ideally fitted to data mining activity
- You work interactively with energy system experts, software developers, IT experts and data scientists on innovative projects relating to our stationary storage and charging infrastructure

Ready to join?

We look forward to your application (including salary requirements and start date) - We are also open to applicants with severe disabilities:


career@mobilityhouse.com

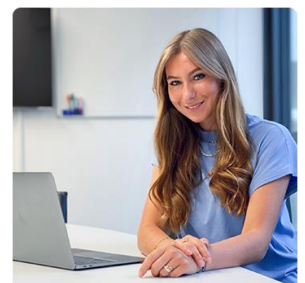
Who you are

- You have studied data engineering, computer science or similar and have extensive experience in data processing
- You are familiar with state-of-the-art data databases and data architecture
- You have already implemented projects in python, and you are familiar with database interaction including common NoSQL databases
- Ideally, you have background knowledge in virtual power plants, storage or distributed energy resources
- You have sharpened your analytical talent through first working experience
- You are a team player and enjoy working in a cross-functional team

Your contact person

Ann-Kathrin Peintner

 +49 89 4161 430 113



www.mobilityhouse.com