



# Instructions for use eConfig



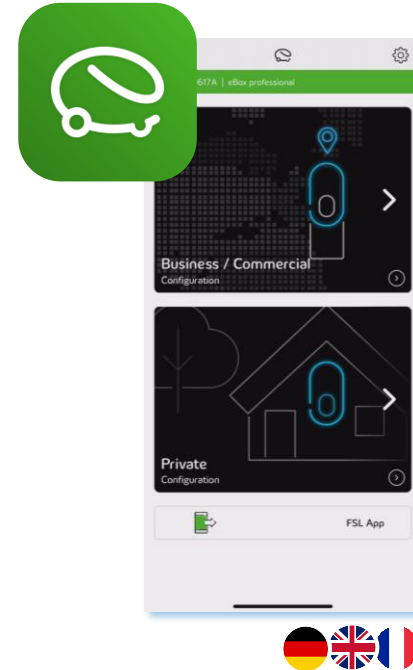
# eConfig General

## eConfig

The app simplifies for installers the installation process of an eBox smart, professional & touch (generation 3).

### Highlights

- ✓ **Strong partners:** The perfect companion for installers
- ✓ **Easy handling:** Convenient setup and configuration process
- ✓ **Several use cases:** For B2B and B2C use case available
- ✓ **Available for free:** Available on the Apple App Store & Google Play Store



# eConfig

## Installer Journey



- 1 To **start** the set-up connect the eBox to your smartphone via **Bluetooth**.
- 2 Get **access** to the eBox configuration via the unique **PUK** of the eBox.
- 3 Enter the **parameters** for the **technical settings** (phases, current, asymmetric load).
- 4 Configure a **network access** and establish connection to a **backend**.
- 5 Configure the **backend settings** (URL, chargebox ID, APN, etc.).



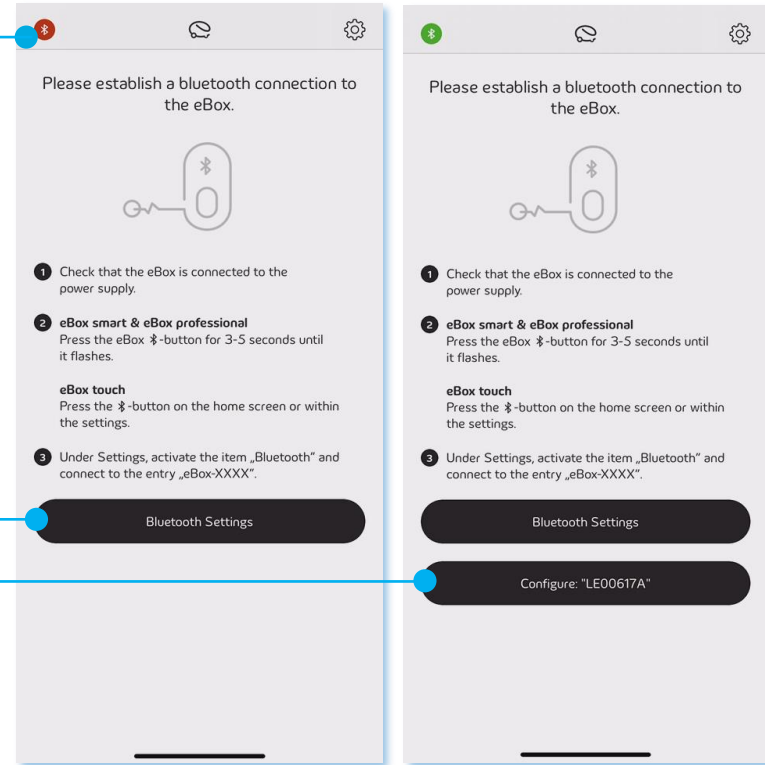
Please make sure that at least the **firmware version 1.1** is installed on the eBox, to configure OCPP parameters.

# eConfig Setup

When launching the app, a guide appears, providing instructions to establish a **Bluetooth connection to the eBox**.

The **red symbol** indicates a missing connection.

Once you, the installer, have established a Bluetooth connection to the eBox, the **icon turns green** and the configuration can continue.

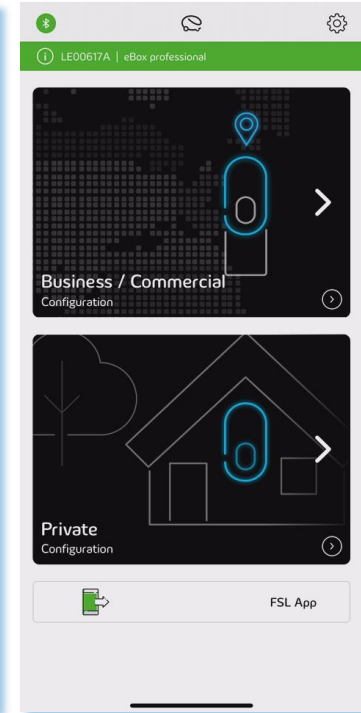
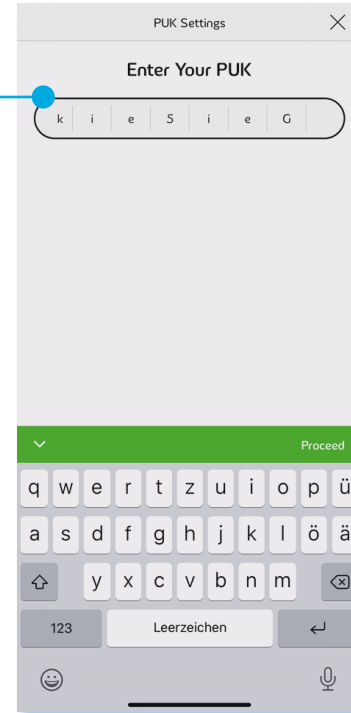


# eConfig

## Get Access to eBox

The PUK is located on the **back of the user manual** that came with the eBox.

After the eBox has been successfully unlocked, you as the installer can choose between a **business or private installation**.



# eConfig

## Technical Configuration

**You as the installer can directly adjust:**

The **region** the eBox is operating in (US or EU)

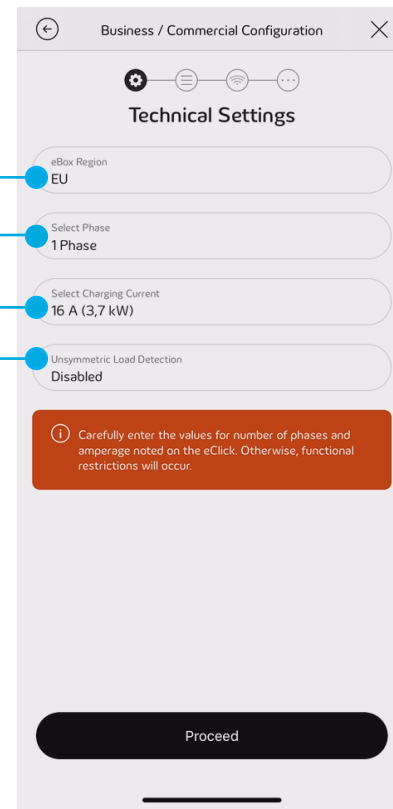
The **number of phases** connected to the eBox  
(1 phase or 3 phases)

The **available charging load** of the eBox (16A, 20A, 32A)

Enable or disable **asymmetric load detection**



The detection of asymmetric load is mandatory in Germany.



Business / Commercial Configuration

Technical Settings

- eBox Region: EU
- Select Phase: 1 Phase
- Select Charging Current: 16 A (3,7 kW)
- Unsymmetric Load Detection: Disabled

ⓘ Carefully enter the values for number of phases and amperage noted on the eClick. Otherwise, functional restrictions will occur.

Proceed

# eConfig

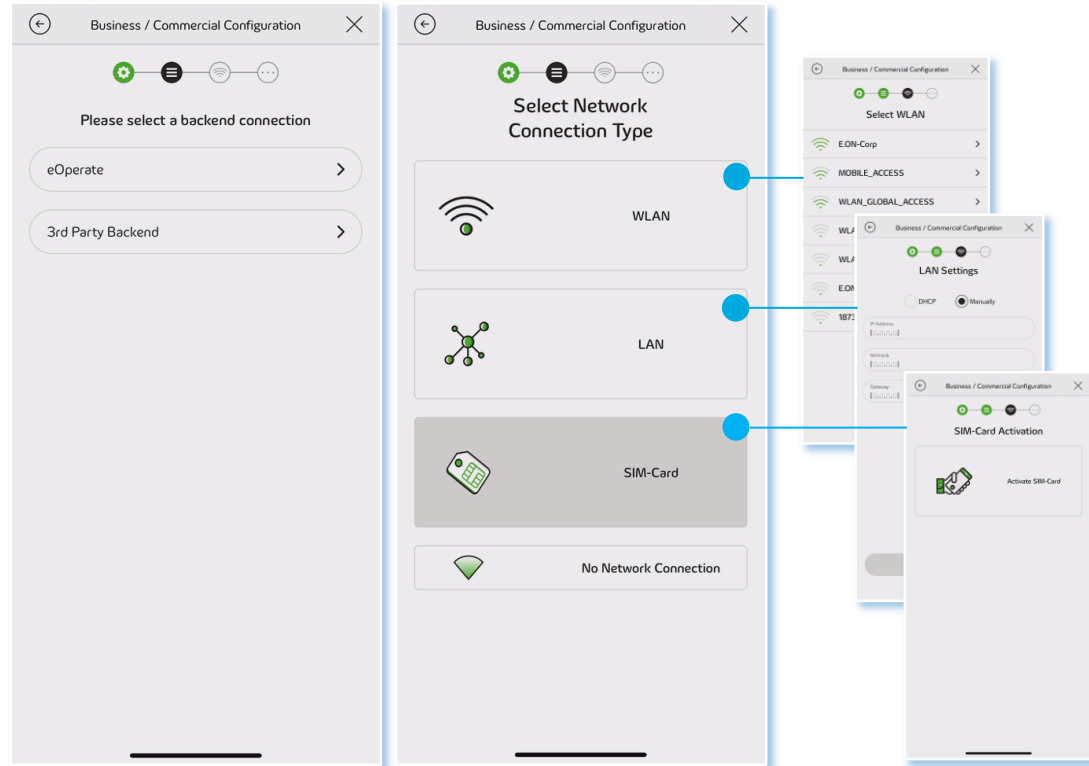
## Network & Backend Connection

During commissioning you as the installer can choose between a connection with **eOperate** or a **3<sup>rd</sup> party backend (B2B)**.

A connection can be established via **WIFI**, **LAN** or **SIM**.

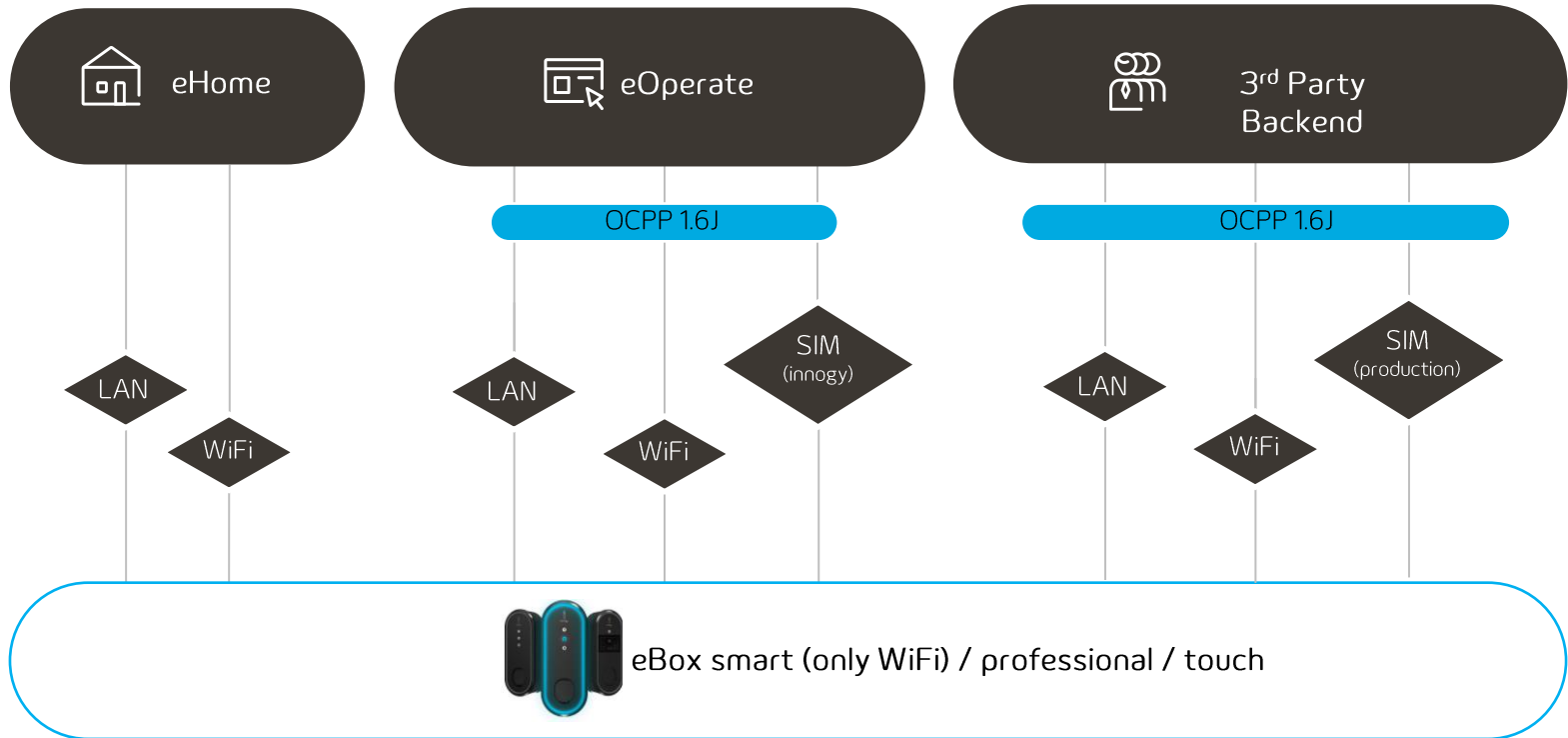
The **SIM card** must be installed and activated.

This can happen during installation or during production for clients with agreements concerning this matter.



# eConfig

## Overview Backend Connection





# eConfig

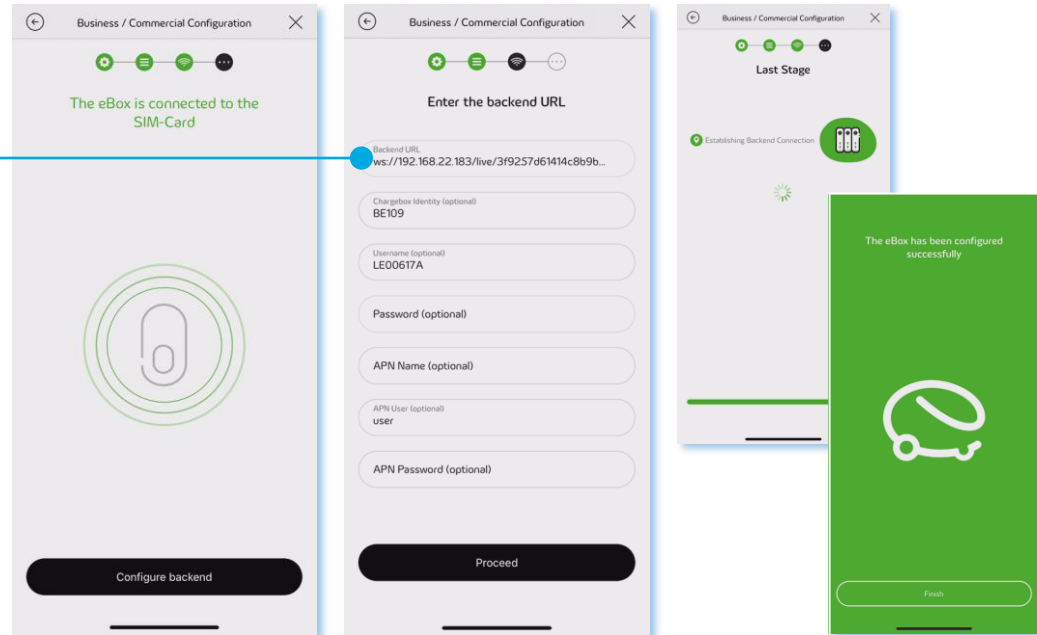
## Backend Configuration

When a **valid network connection** is established, the you can proceed with the **backend settings**.

As the most important field, the **Backend URL** must be entered by the installer.

When continuing, the **backend connection** is validated.

A **green screen** with the "rolling e" indicates a successful configuration. The eBox will now reboot and apply the changes.



# eConfig

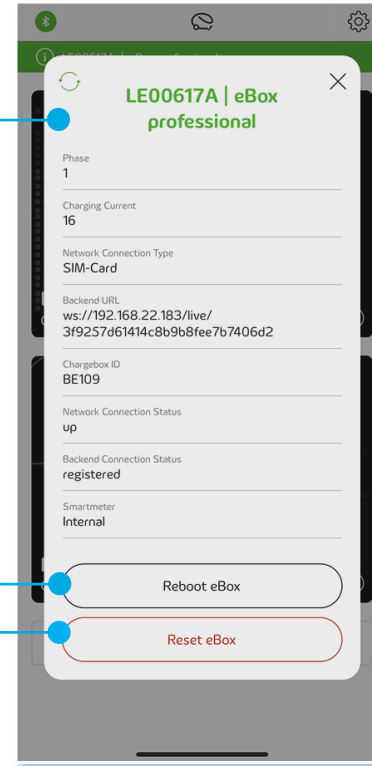
## Reconnect and Validate

After successful commissioning, you can **access and configure the eBox** via its **backend portal**.

When reconnecting to the eBox, a **summary of the configuration** is displayed. Use this view to validate the entered parameters.

You can **update** the data via the refresh icon, **reboot** the eBox or **reset** it to factory settings.

If you want to **adjust parameters**, you must complete the commissioning process again.



**innogy eMobility Solutions GmbH**

Flamingoweg 1  
44139 Dortmund  
Germany

[emobility@innogy.com](mailto:emobility@innogy.com)  
[innogy-emobility.com](https://innogy-emobility.com)

As of: 09/2021  
innogy Document Center:

